



MATAKAURI

QUEENSTOWN NEW ZEALAND

Nestled amongst lush forest, and on the sparkling shores of Lake Wakatipu, the Lodge gazes up at the breathtaking peaks of The Remarkables mountain ranges. And though you'll feel world's away in this serene alpine landscape, Matakauri Lodge is only minutes from the adventure capital of New Zealand, Queenstown.



Photograph taken prior to renovation.



MATAKAURI LODGE

QUEENSTOWN, NEW ZEALAND

OPENING AUGUST 27 2010.

As befits the sheer magnificence of this landscape, the lodge experience that awaits you here is exceptional.

Our guests will enjoy world-class dining experiences, luxurious accommodation, exemplary service and every modern amenity one could wish for.

Divine cuisine from award-winning chefs and an exceptional wine selection set a world-class table at Matakauri Lodge, all served before a stunning panorama of alpine lake and rugged mountain peaks.

The main lodge presents stylish and spacious lounge, dining and living areas to relax in, all with enchanting views of Lake Wakatipu. A luxury Spa facility, infinity swimming pool and sauna with a modern fitness centre are also on-site for our guests to enjoy.

Matakauri Lodge makes an inspiring and inspired choice for a small conference, offering an elegant, dedicated meeting space and business centre.

ON SITE ACTIVITIES

- Luxurious spa facility
- Fitness Centre
- Outdoor infinity swimming pool
- Sauna
- Jacuzzi
- Walking trails

AREA ACTIVITIES

- Golf
- Horse riding
- Fly fishing
- Hiking
- Skiing
- Water sports
- Adrenalin sports
- Wine tours
- Scenic flights

GETTING TO QUEENSTOWN

Air New Zealand, Jet Star and Qantas operate daily flights to Queenstown from Auckland, Wellington and Christchurch, with Pacific Blue offering twice-weekly services. If travelling from Australia, direct services are available from Sydney, Brisbane and Melbourne. Charter flights may also be organised and Matakauri Lodge will meet your flight upon request.

GETTING TO MATAKAURI

Twenty minutes from Queenstown Airport and just seven minutes from downtown Queenstown, Matakauri Lodge is superbly located on Lake Wakatipu.



Contact Matakauri

Jay Robertson - General Manager
 Farrycroft Row, Queenstown
 PO Box 8850, Havelock North, New Zealand
 Tel: +64 3 441 1008 Fax: +64 3 441 2180
 email: info@matakaurilodge.com

ACCOMMODATION

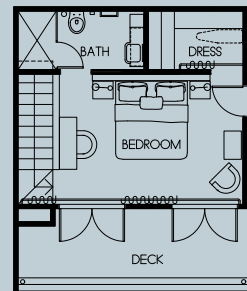
At the end of another superb day exploring this world-renowned region, come home to your spacious accommodation, one of eleven luxurious suites. Select from eight outlying suites, two lodge suites and one lodge room. Relax on your own private balcony, watching the colours of Lake Wakatipu and the spectacular mountain ranges change as day turns to dusk. Along with stunning panoramic views, every suite boasts a generous bedroom with sitting area and fireplace, walk-in wardrobe and spacious bathroom with twin vanities and oversized bath tub.

Styled by acclaimed interior designer Virginia Fisher, every suite also features high speed wireless Internet, fully-stocked mini-bar, room-controlled air conditioning, flat screen LCD TV, DVD player, CD player with iPod connection and security safe.

LODGE ROOM 1 room - 25 sq m / 269 sq ft

- Located on the upper level of the main lodge, our lodge room offers an interconnecting option with a Deluxe Suite.

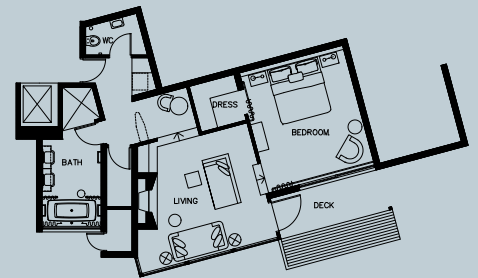
	Double	Single
Opening Season	\$595	\$895
Summer Season	\$700	\$1,150



SUITES 2 outlying - 72.8 sq m / 783.6 sq ft

- Superbly situated along the lake-front and just a short walk from the main lodge, these spacious suites offer their own private balconies overlooking Lake Wakatipu.

	Double	Single
Opening Season	\$620	\$920
Summer Season	\$950	\$1,435

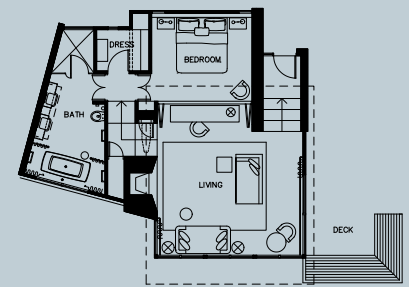


DELUXE SUITE

6 outlying and 2 within the main lodge - 76 sq m / 818 sq ft
 Indicative size given as individual suite layouts vary

- These, our largest suites, have commanding views of Lake Wakatipu and the glorious snow-capped mountains.
- The two suites in the main lodge offer the convenience of proximity to lodge facilities.

	Double	Single
Opening Season	\$720	\$1,150
Summer Season	\$1,080	\$1,750



Indicative only.

Please Note: Tariff includes accommodation, pre-dinner drinks with hors d'oeuvres, dinner, full breakfast, complimentary mini bar including domestic beers (excludes liquor and wine) and use of all lodge facilities excluding spa treatments.

Opening season: Aug 27 - Oct 31 '10 Summer season: Nov 1 '10 - April 30 '11

Rates are quoted on a per person, per night basis. All rates are quoted in New Zealand dollars and exclude 12.5% Government Goods & Services Tax. A holiday season surcharge of NZD \$200.00 (per person, per night) applies to guests staying 23 December 2010 - 5 January 2011. This surcharge is non-commissionable. A two night minimum stay applies 15 December 2010 - 31 March 2011.